



# ‘Development of Basin Monitoring and Evaluation System’ Project

International Integrated Basin Management Workshop,  
February 2014, İstanbul

Hande BİLİR

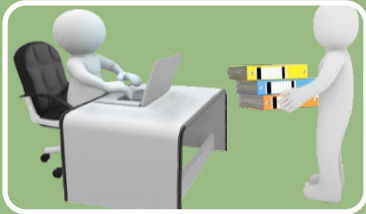
TUBITAK-BILGEM-YTE  
Spatial Information Technologies Unit  
Head of Unit/  
Project Manager



## Basin Monitoring and Evaluation System



## Development of Basin Monitoring and Evaluation System Project's Work Packages and The Project Team



## Current Situation



## Expected Outcomes of The Project

# Basin Monitoring and Evaluation System

# HIDS is about...



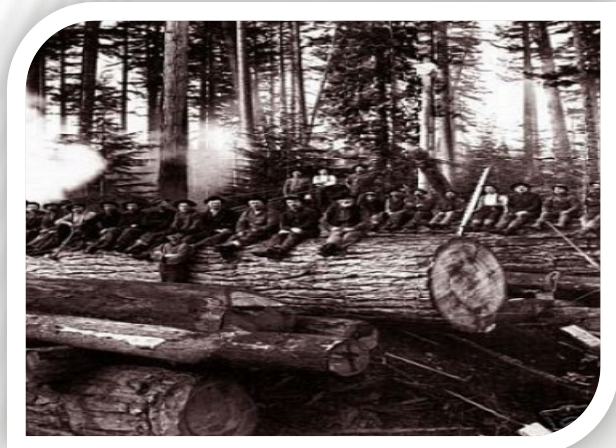
**Protecting natural resources**



**Socioeconomic Development of  
Forest Villagers**



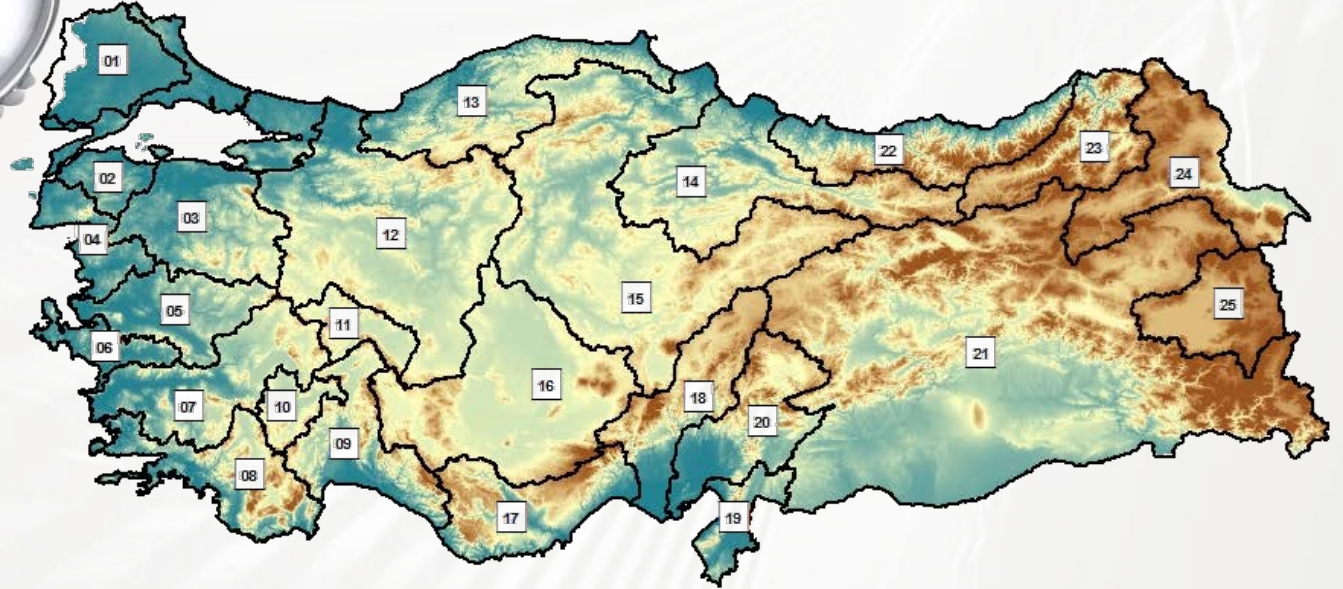
**Reducing natural disasters' damages**



**Coordination between organisations  
in terms of a sustainable basin management**



## Basin Monitoring and Evaluation System



Basin Monitoring and Evaluation System is a model evaluation and monitoring system which is a country-wide system and provides to monitor and evaluate related themes all together such as erosion, desertification, land use, forest.

# The Framework of Basin Monitoring and Evaluation System

## Basin Monitoring and Evaluation System

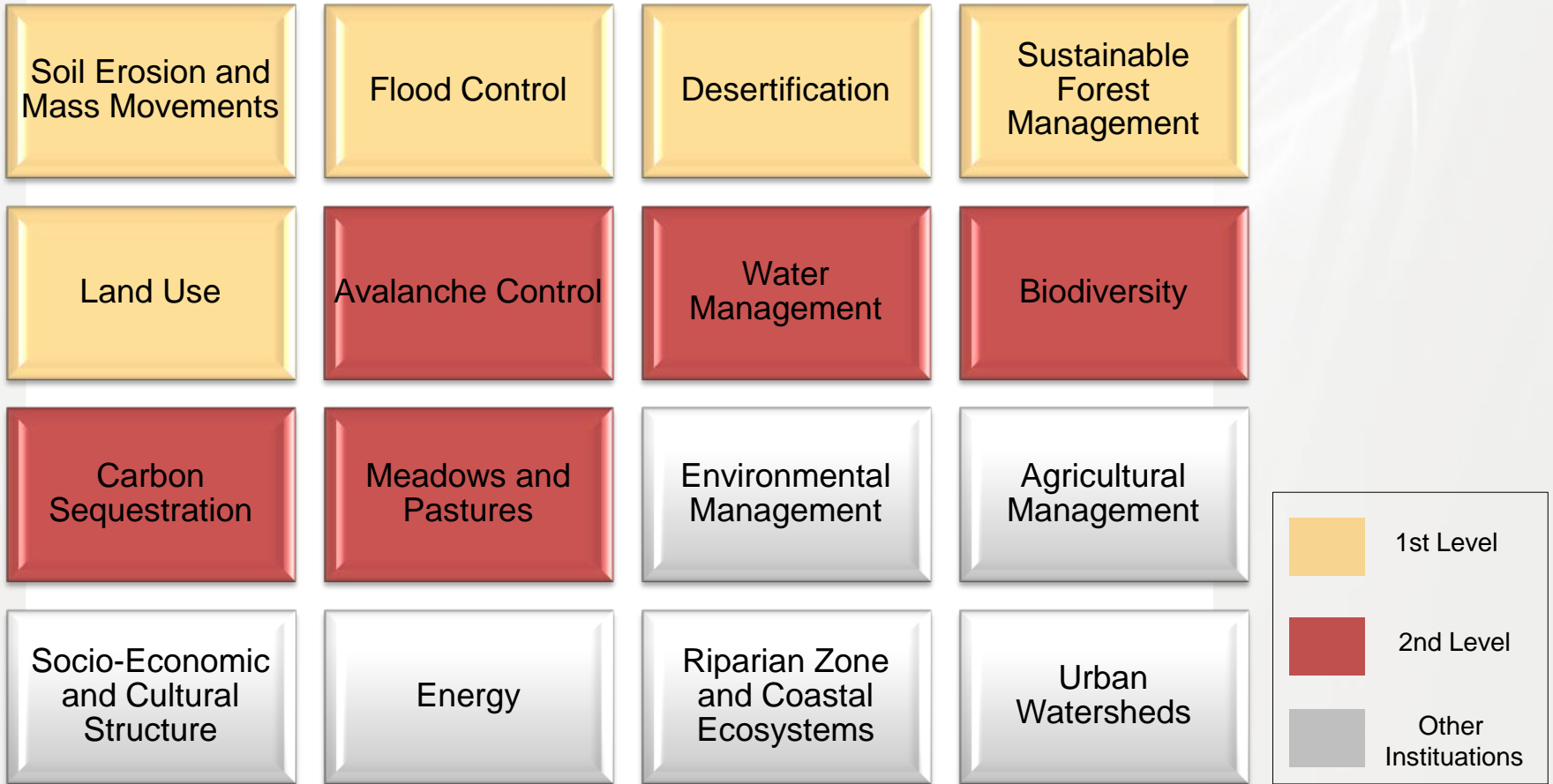
What are the Monitoring Levels?

What is the scope?  
Which Themes?

What about the technical infrastructure?



## Basin Monitoring Data Themes





## 1st Level Monitoring

- Organizations' Priorities
- Sub-Basin and Micro Catchment Details



## 2nd Level Monitoring

- Basin and Sub-Basin detail
- «Sustainable Basin Management»



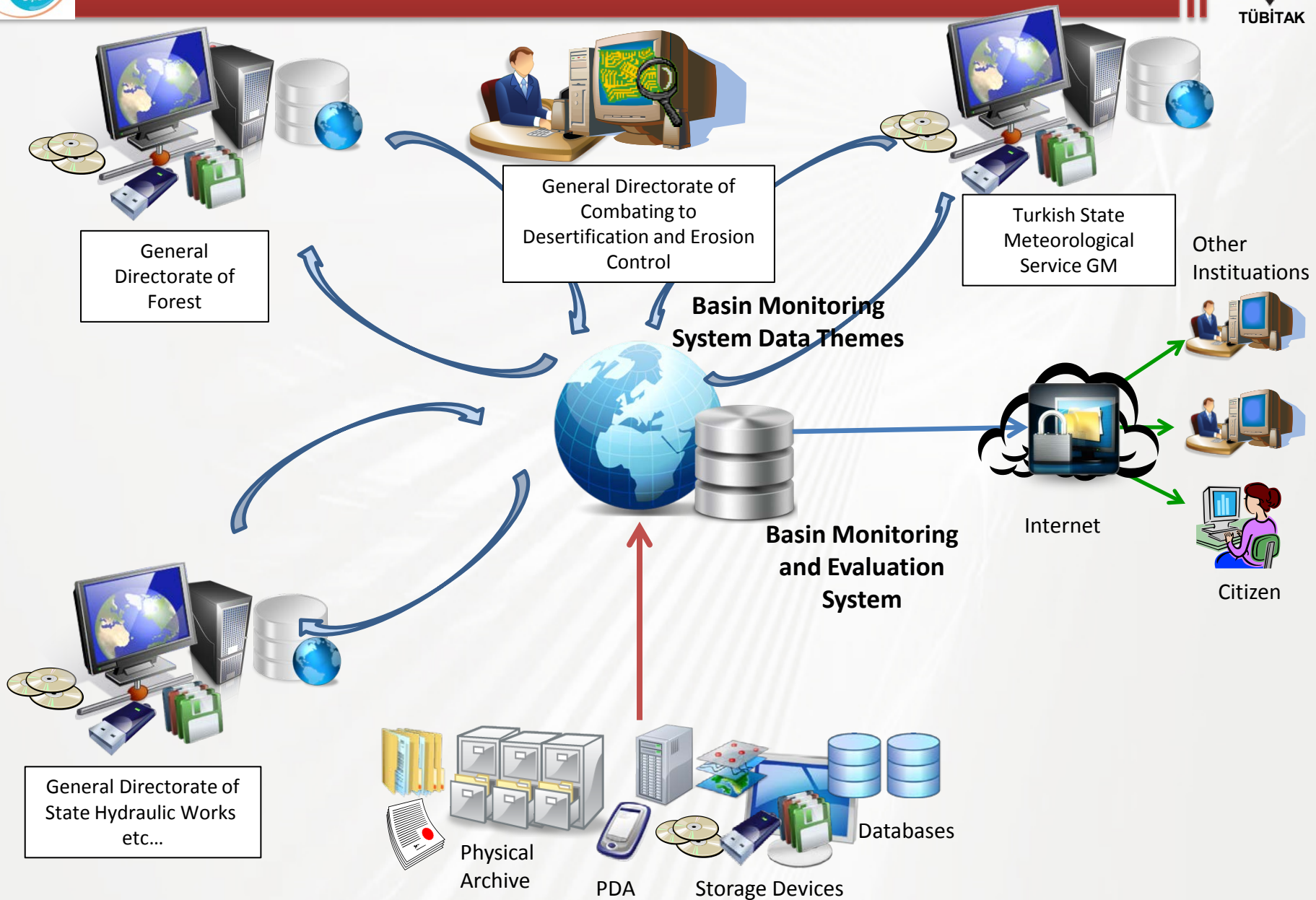
## 3rd Level Monitoring

- Relations between basin
- Relationships between themes
- Country-wide policies





# Technical Infrastructure



# Development of Basin Monitoring and Evaluation System Project

## Modeling Desertification and Producing Risk Map for Turkey

Turkey Desertification Model

Risk Maps

## Validation and Calibration of Basin Monitoring and Evaluation Model

Pilot Scheme

Grouping Basins

## Basin Monitoring and Evaluation System

Analysis Module

Presentation Module

## Geographic Information System Trainings

Fundamental

Introduction

Advanced

# TÜBİTAK Project Team



NO	Name /Surname	
1	Dr. Murat Kahraman GÜNGÖR	TÜBİTAK – BİLGEM - YTE
2	Mustafa BAŞGÜN	TÜBİTAK – BİLGEM - YTE
3	Dr. Orhan ÇETİNKAYA	TÜBİTAK – BİLGEM - YTE
4	Dr. Ahmet TUMAY	TÜBİTAK – BİLGEM - YTE
5	Kadriye ÖZBAŞ ÇAĞLAYAN	TÜBİTAK – BİLGEM - YTE
6	Meltem ARI	TÜBİTAK – BİLGEM - YTE
7	Hande BİLİR	TÜBİTAK – BİLGEM - YTE
8	Yalın YENER	TÜBİTAK – BİLGEM - YTE
9	Engin GEM	TÜBİTAK – BİLGEM - YTE
10	Sedat FINDIK	TÜBİTAK – BİLGEM - YTE
11	Eren CON	TÜBİTAK – BİLGEM - YTE
12	Seda ATMACA	TÜBİTAK – BİLGEM - YTE
13	Prof. Dr. Günay ERPUL	TÜBİTAK – BİLGEM – YTE / Ankara University
14	Prof. Dr. Taşkın ÖZTAŞ	TÜBİTAK – BİLGEM – YTE / Atatürk University
15	Prof. Dr. Kani IŞIK	TÜBİTAK – BİLGEM – YTE / Akdeniz University
16	Prof. Dr. Murat TÜRKEŞ	TÜBİTAK – BİLGEM – YTE / Çanakkale 18 Mart University
17	Prof. Dr. Sabit ERŞAHİN	TÜBİTAK – BİLGEM – YTE / Çankırı Karatekin University
18	Prof. Dr. Erhan TERCAN	TÜBİTAK – BİLGEM – YTE / Hacettepe University
19	Prof. Dr. Tuncay NEYİŞÇİ	TÜBİTAK – BİLGEM – YTE / Akdeniz University
20	Prof. Dr. Bülent GÜLÇUBUK	TÜBİTAK – BİLGEM – YTE / Ankara University
21	Doç. Dr. Alptekin KARAGÖZ	TÜBİTAK – BİLGEM – YTE / Aksaray University
22	Doç. Dr. Orhan DENGİZ	TÜBİTAK – BİLGEM – YTE / Samsun 19 Mayıs University
23	Yrd. Doç. Dr. Ayhan ATEŞOĞLU	TÜBİTAK – BİLGEM – YTE / Bartın University
24	Yrd. Doç. Dr. Hakan NEFESLİOĞLU	TÜBİTAK – BİLGEM – YTE / Hacettepe University
25	Banu Deniz GÜNEL	TÜBİTAK – BİLGEM - YTE
26	Kemal ARSLAN	TÜBİTAK – BİLGEM - YTE
27	Yeter ERDEM	TÜBİTAK – BİLGEM - YTE
28	Dr. Yavuz İNAL	TÜBİTAK – BİLGEM - YTE
29	Ali YILMAZ	TÜBİTAK – BİLGEM - YTE

# Current Situation at The Project

## Modeling Desertification and Producing Risk Map for Turkey

Turkey Desertification Model

Risk Maps

## Validation and Calibration of Basin Monitoring and Evaluation Model

18.11.13-  
24.02.14

Pilot Scheme

Grouping Basins

## Basin Monitoring and Evaluation System

Analysis Module

Presentation Module

## Geographic Information System Trainings

Fundamental

Introduction

Advanced

# Generally...



- Collaboration with ÇEM (General Directorate of Combatting Desertification)
- Convenient to The Project Contract and The Project Management Plan



Kick-Off Meeting



Meeting with Undersecretary





## Meetings with Stakeholders



Tarih	Kurum
17 Aralık 2013	Strateji Geliştirme Başkanlığı
17 Aralık 2013	Bilgi İşlem Daire Başkanlığı
17 Aralık 2013	Doğa Koruma ve Milli Parklar Genel Müdürlüğü
18 Aralık 2013	Su Yönetimi Genel Müdürlüğü
23 Aralık 2013	Meteoroloji Genel Müdürlüğü
24 Aralık 2013	Devlet Su İşleri Genel Müdürlüğü
9 Ocak 2014	Tarım Reformu Genel Müdürlüğü
5 Aralık 2013	Çölleşme Eğitimi
12 Aralık 2013	Birleşmiş Milletler Biyolojik Çeşitlilik ve Ekosistem Hizmetleri Hükümetlerarası Platformu (IPBES)

# Work Package-2: Development of Basin Monitoring and Evaluation System

# Activities Done on Work Package 2



Literature  
Review



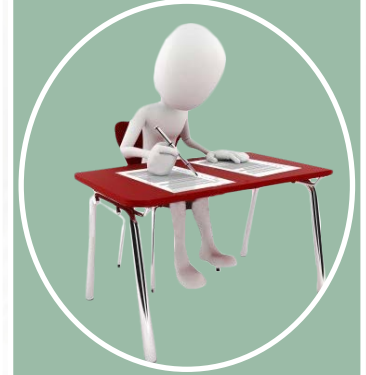
Software  
Requirement  
Analysis



Analysis on  
Related Systems



Analysis of  
National and  
International  
Data Models

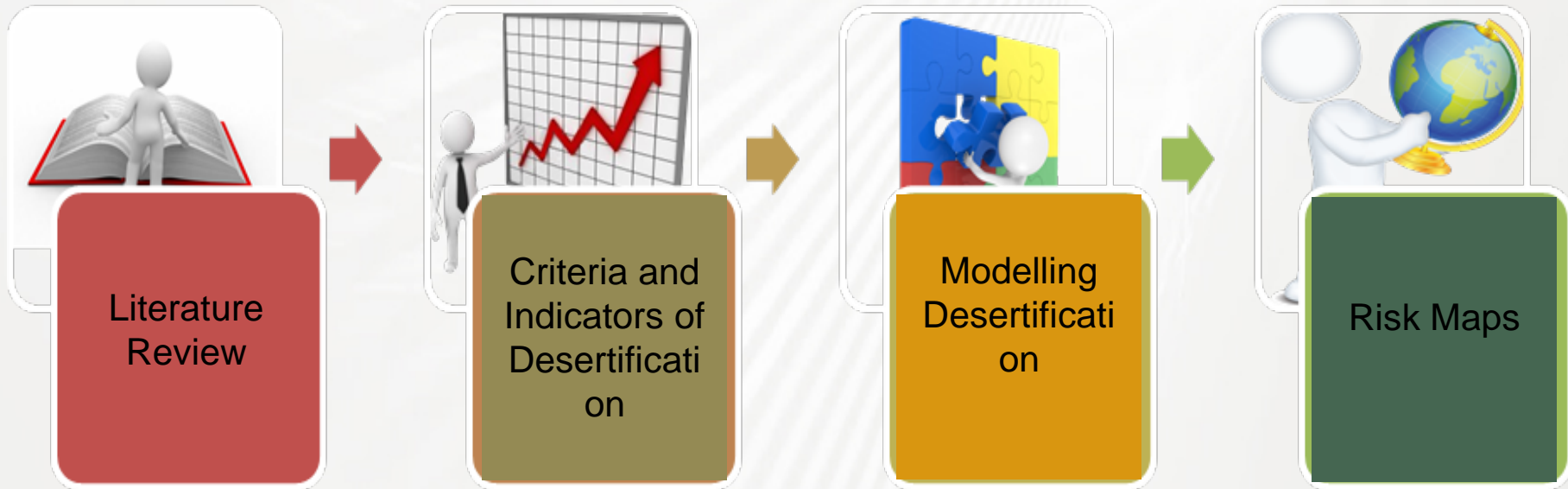


SRS  
Documentation

Software Requirement Analysis...

# Work Package-3: Modeling Desertification and Producing Risk Map for Turkey

## Methodology

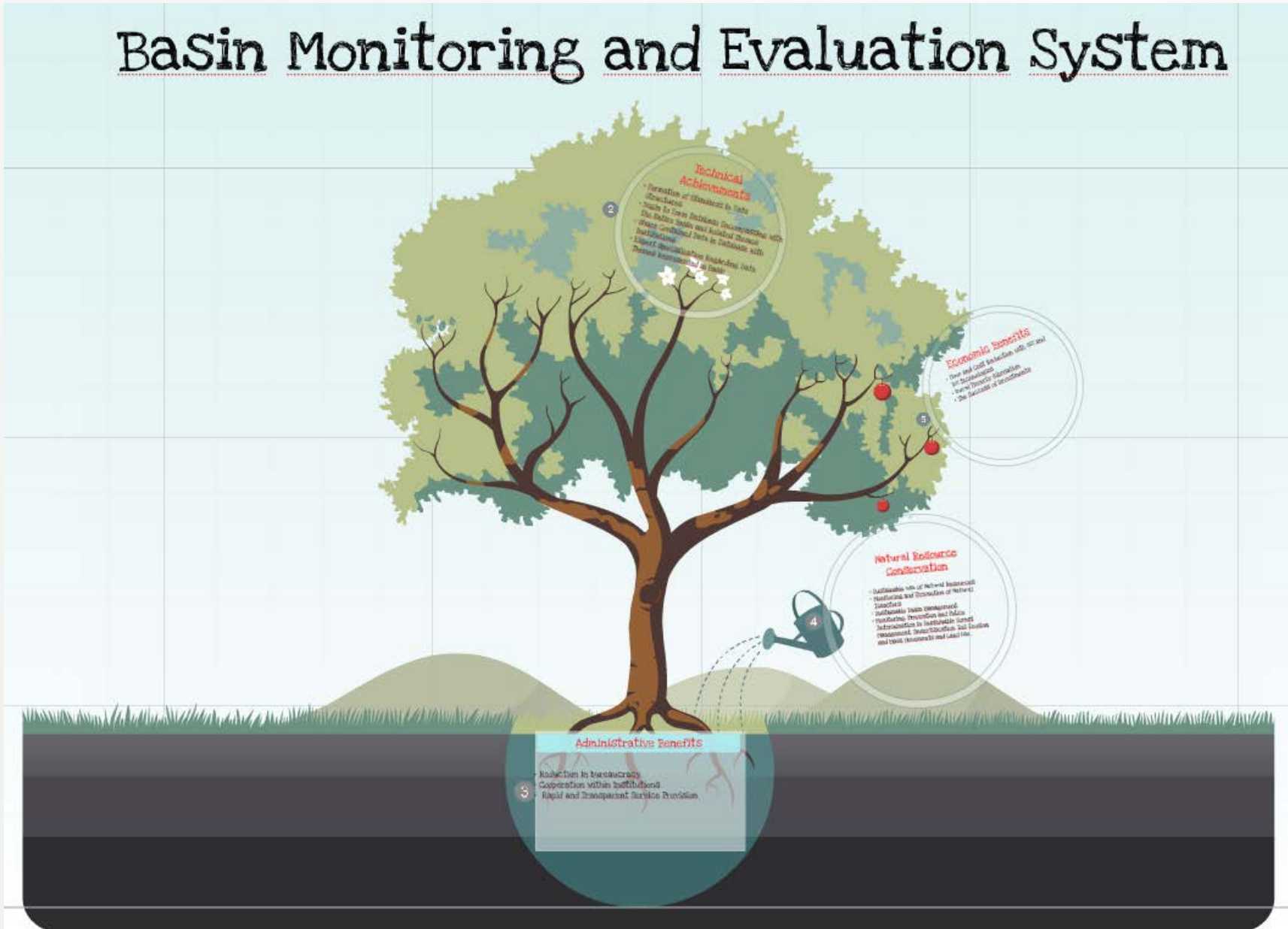


# Work Package-4: Geographic Information System Trainings



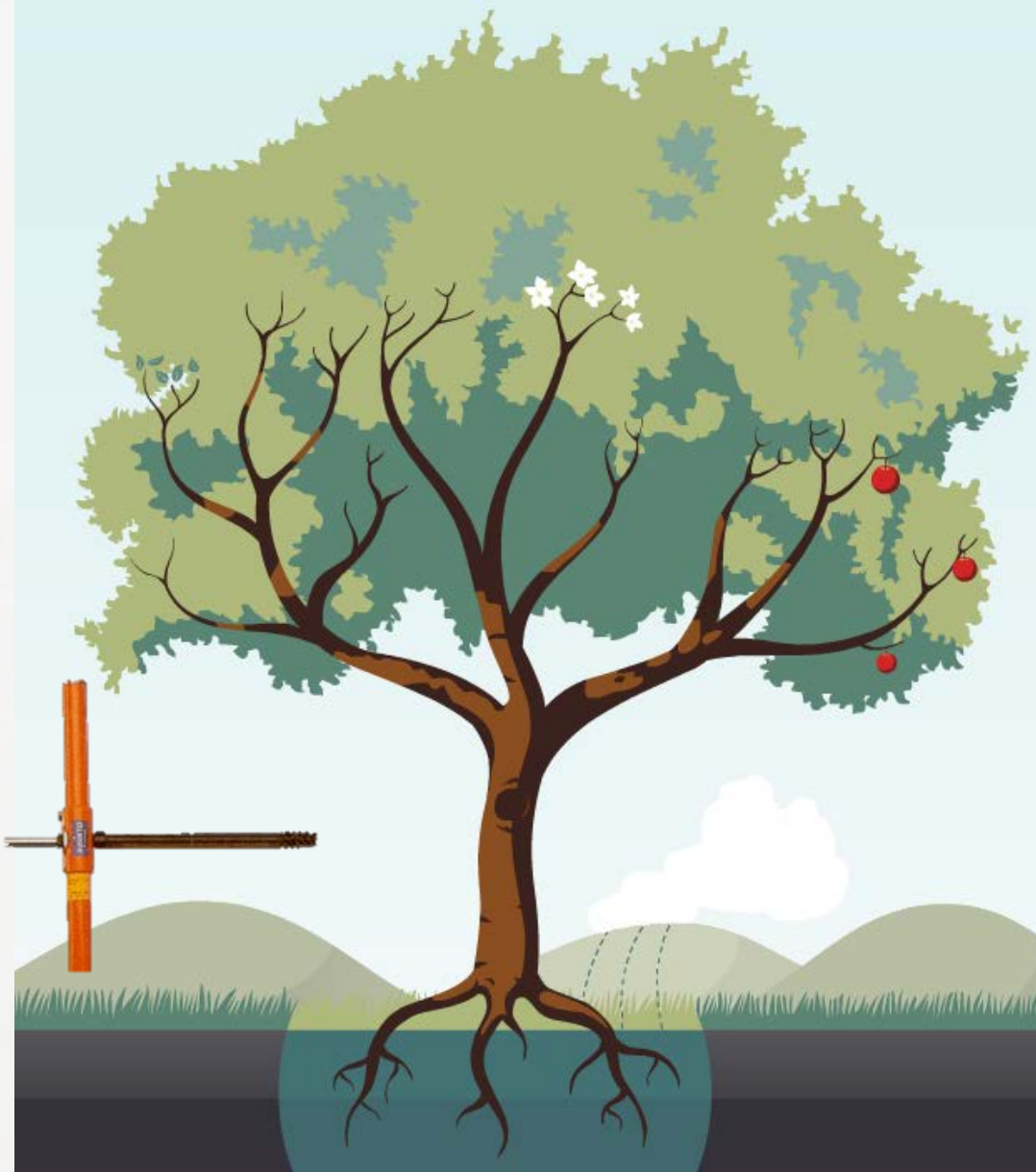
# Expected Outcomes of The Project

## Basin Monitoring and Evaluation System

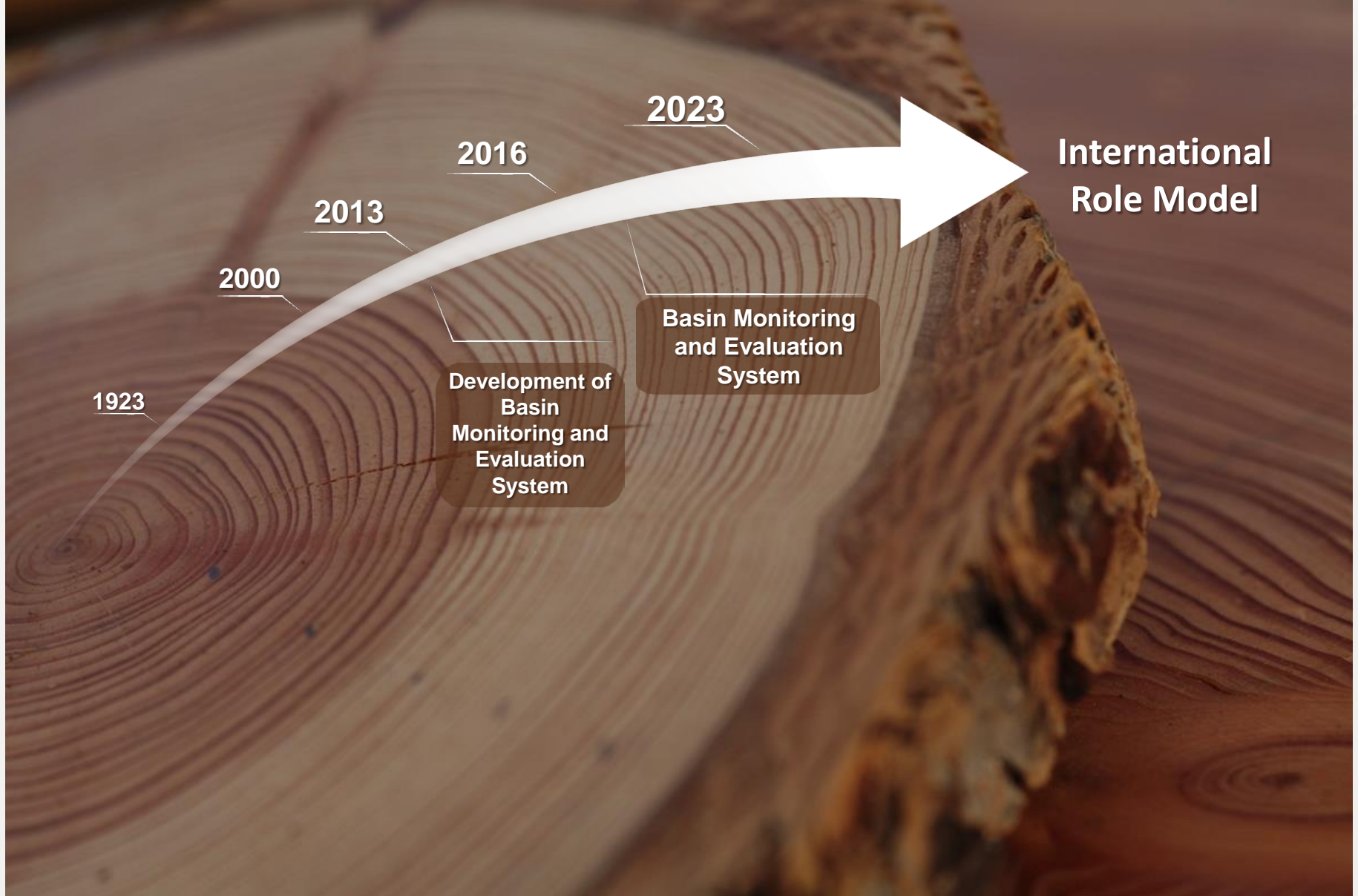




# Expected Outcomes of The Project



# Expected Outcomes of The Project





**THANK YOU...**

**<http://hids.yte.bilgem.tubitak.gov.tr>**

**e-Posta: [hande.bilir@tubitak.gov.tr](mailto:hande.bilir@tubitak.gov.tr)**

**Tel: (312) 289 9222/ 2541-2542**

**Direkt Hat: (312) 289 9225**



Çukurambar Mah. 1478. Cadde No:22 06100

Çankaya / ANKARA

+90 (312) 289 9 222

[yte.bilgem@tubitak.gov.tr](mailto:yte.bilgem@tubitak.gov.tr)

<http://yte.bilgem.tubitak.gov.tr/>